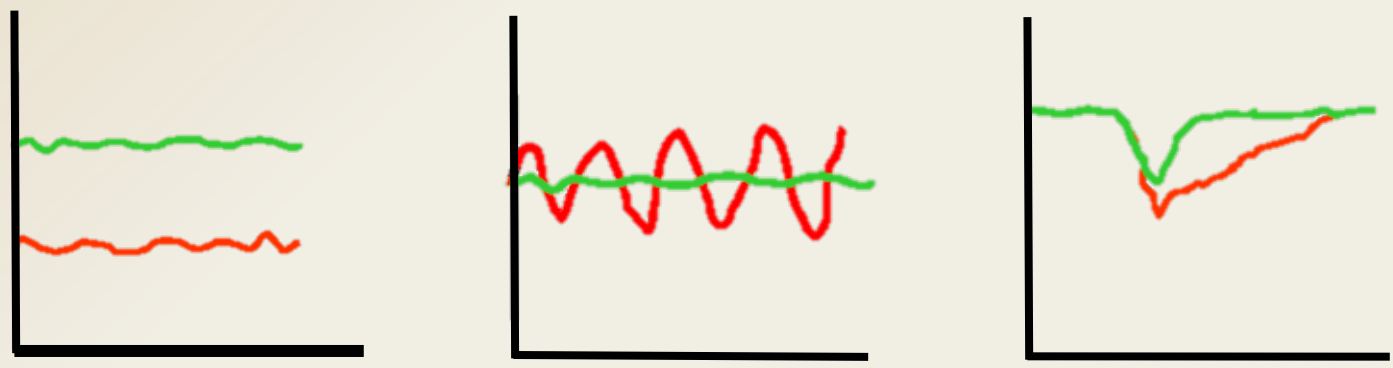




# Resilience, stability & productivity of Alfalfa cultivars in Wisconsin



Valentín D. Picasso and Dan Undersander  
Agronomy Department  
University of Wisconsin – Madison  
North American Alfalfa Improvement Conference  
July 14<sup>th</sup>, 2016



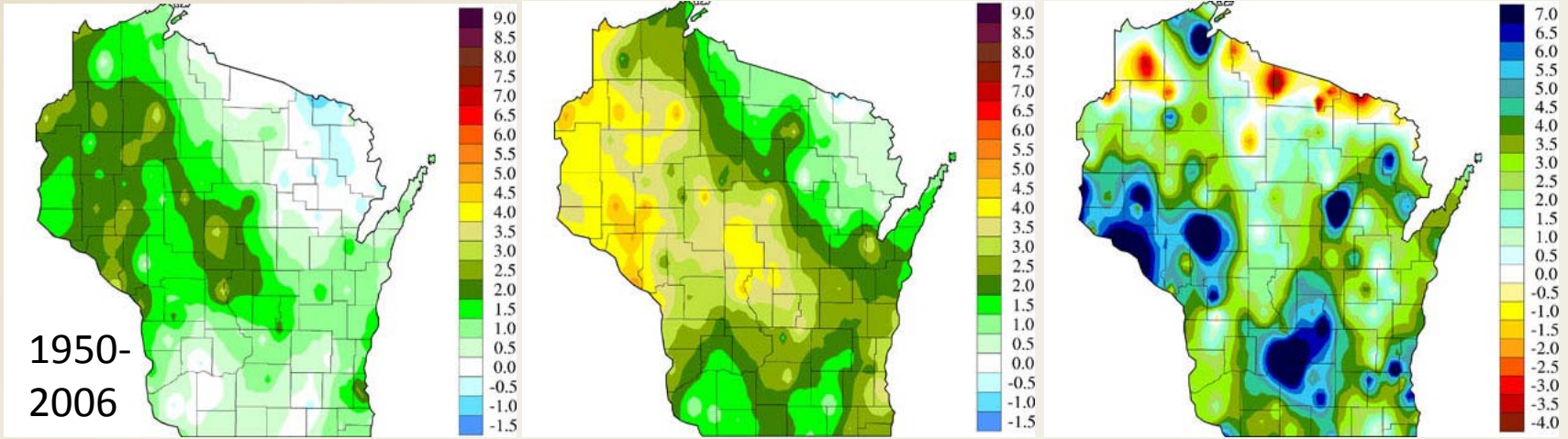
# Climate Change in Wisconsin



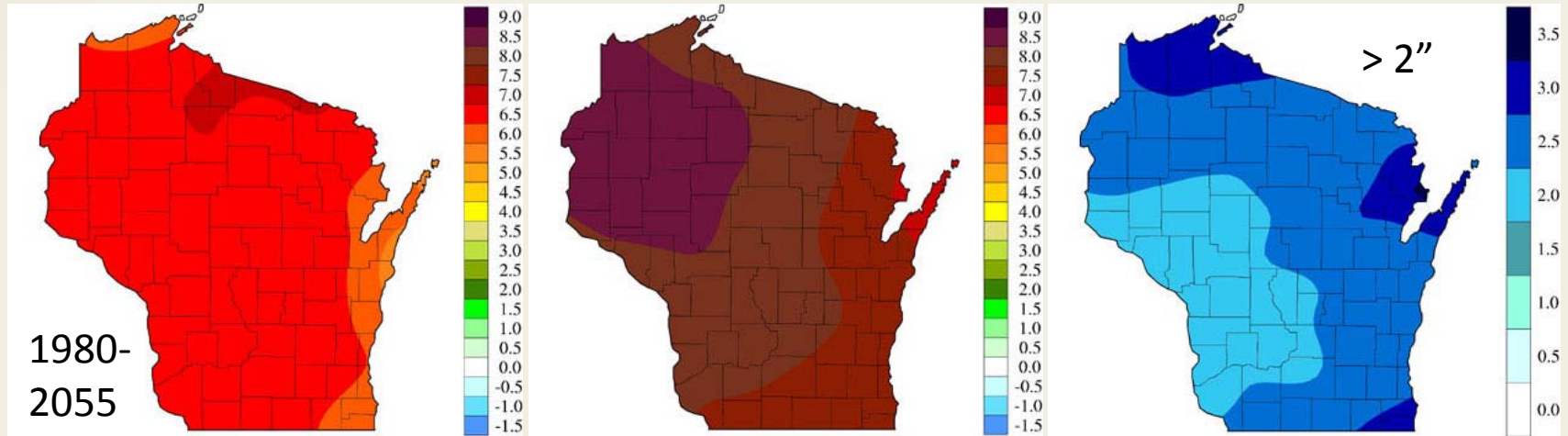
Annual Temperature (°F)

Winter Temperature (°F)

Annual Precipitation (in)



1950-  
2006



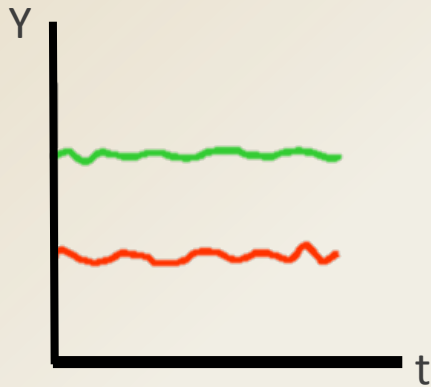
1980-  
2055



# Definitions

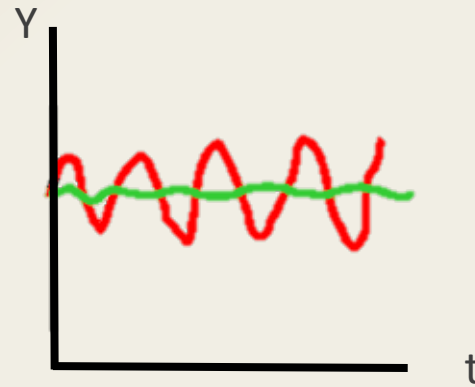
## Productivity

= mean yield



## Stability

= mean/st dev



## Resilience

= min/mean

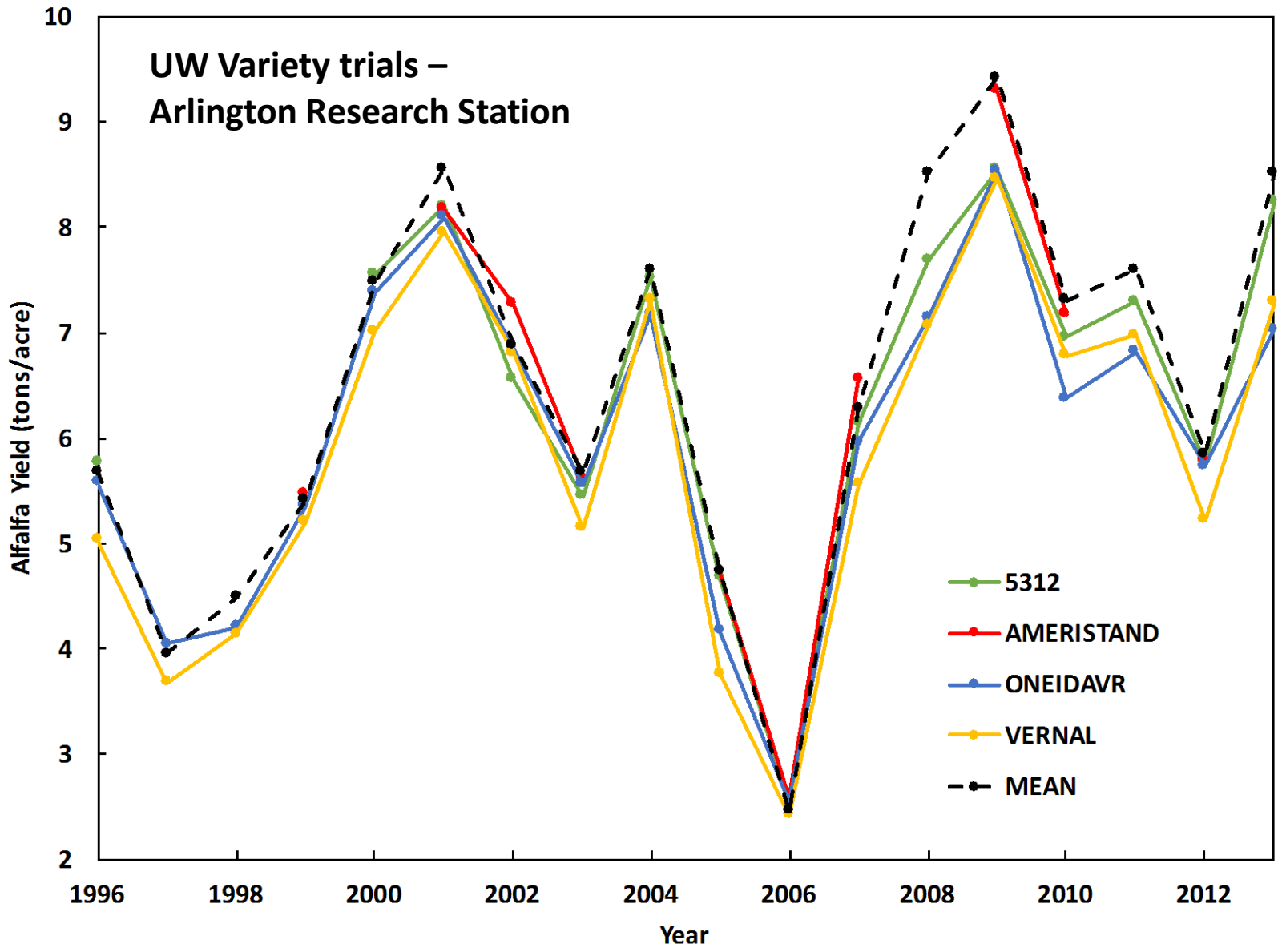


# Questions

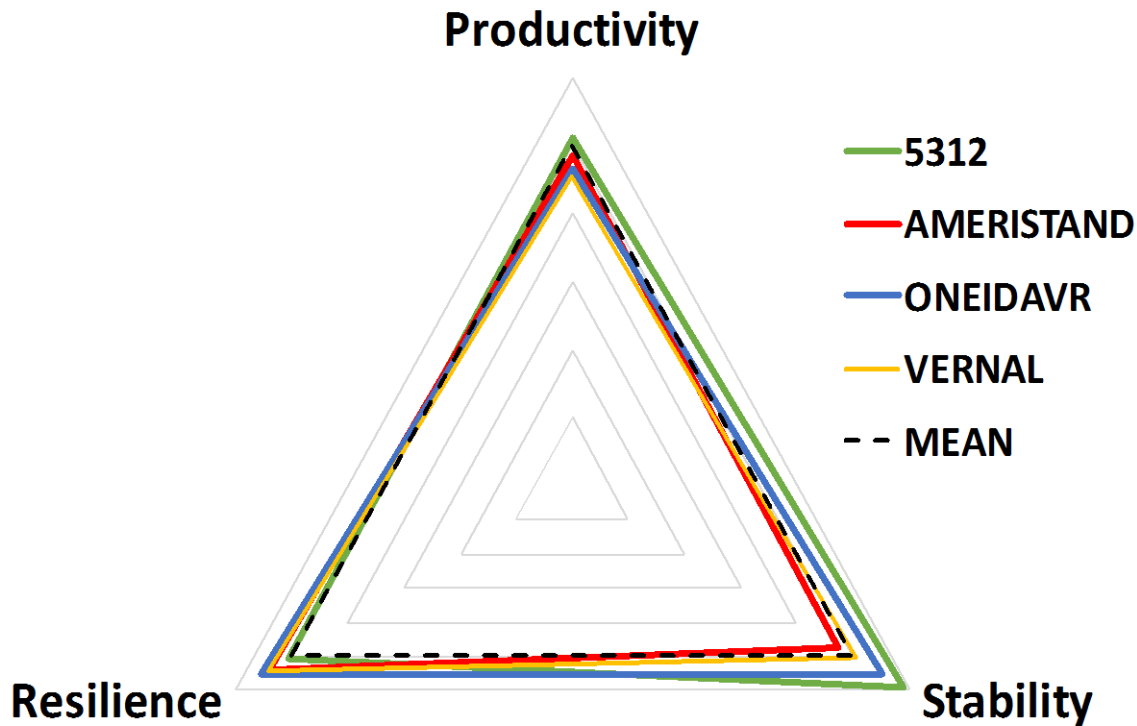
- Are there differences between cultivars in resilience and stability?
- Are there trade offs between productivity, stability and resilience?



# UW Variety trials – Arlington Research Station



# Results and Discussion



<b>r</b>	<b>Product.</b>	<b>Stability</b>
Stability	0.320	-
Resilience	-0.844	-0.207